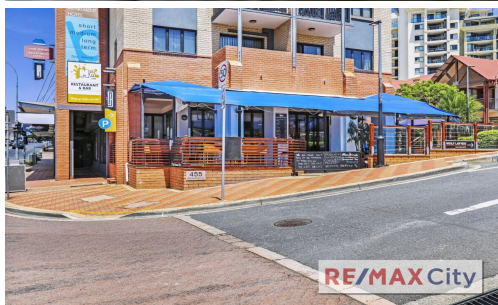


FOR SALE



## **Lot 1/455 Brunswick Street, Fortitude Valley**

RE/MAX City are pleased to present Lot 1, 455 Brunswick Street to the market. It offers excellent exposure to Brunswick Street with an immense amount of daily passing traffic situated on a prime corner position. The tenancy is part of a bustling multi use complex in the heart of Fortitude Valley and is only 2km to the CBD.

- 140m2 plus 97m2 exclusive use area
- 1 car park included
- Leased until 2026
- Fully equipped Cafe / Restaurant
- Glass Bifold doors on 3 sides leading to expansive outdoor area
- Prime corner site
- Plenty of customer car parking onsite

Benefiting from its prime position in Fortitude Valley with an excellent level of public transport and retail amenity within immediate proximity. This includes, the Fortitude Valley Train Station, Brunswick Street Mall and the James Street retail precinct.

Please contact Marketing Agent Chris Esdale for further information and to schedule your

**Price:** Contact Agent

**View:** [remax.com.au/property-details/1P1349](http://remax.com.au/property-details/1P1349)

**Chris Esdale**  
**M 0401 540 129**

**RE/MAX City, Brisbane City**

**<http://www.remaxcity.com.au>**

Each office independently owned and operated

PO Box 821, Brisbane City, QLD, 4000

OFFICE 07 3181 8888